



# Celje cup 2026

## open/standard/club class

*Organized by  
Aeroklub Celje  
24.6. – 4.7.*



## Location

Aeroklub Celje, Medlog 20, 3000 Slovenija

ICAO Code: LJCL

Coordinates: 46°14'36.89"N / 015°13'31.63"E

Elevation AMSL: 244 m / 801 ft

## Contacts

Airfield manager (Teodor): +386 30 608 850

Event manager (Toni): +386 41 453 960

Contest director (Erazem): +386 41 335 275

E-mail: [info@wwgc2027.com](mailto:info@wwgc2027.com)



Website: <https://www.wwgc2027.com/>





Results: [https://www.soaringspot.com/en\\_gb/celjecup26/](https://www.soaringspot.com/en_gb/celjecup26/)

Flights should be submitted to [scoring@wwgc2027.com](mailto:scoring@wwgc2027.com)

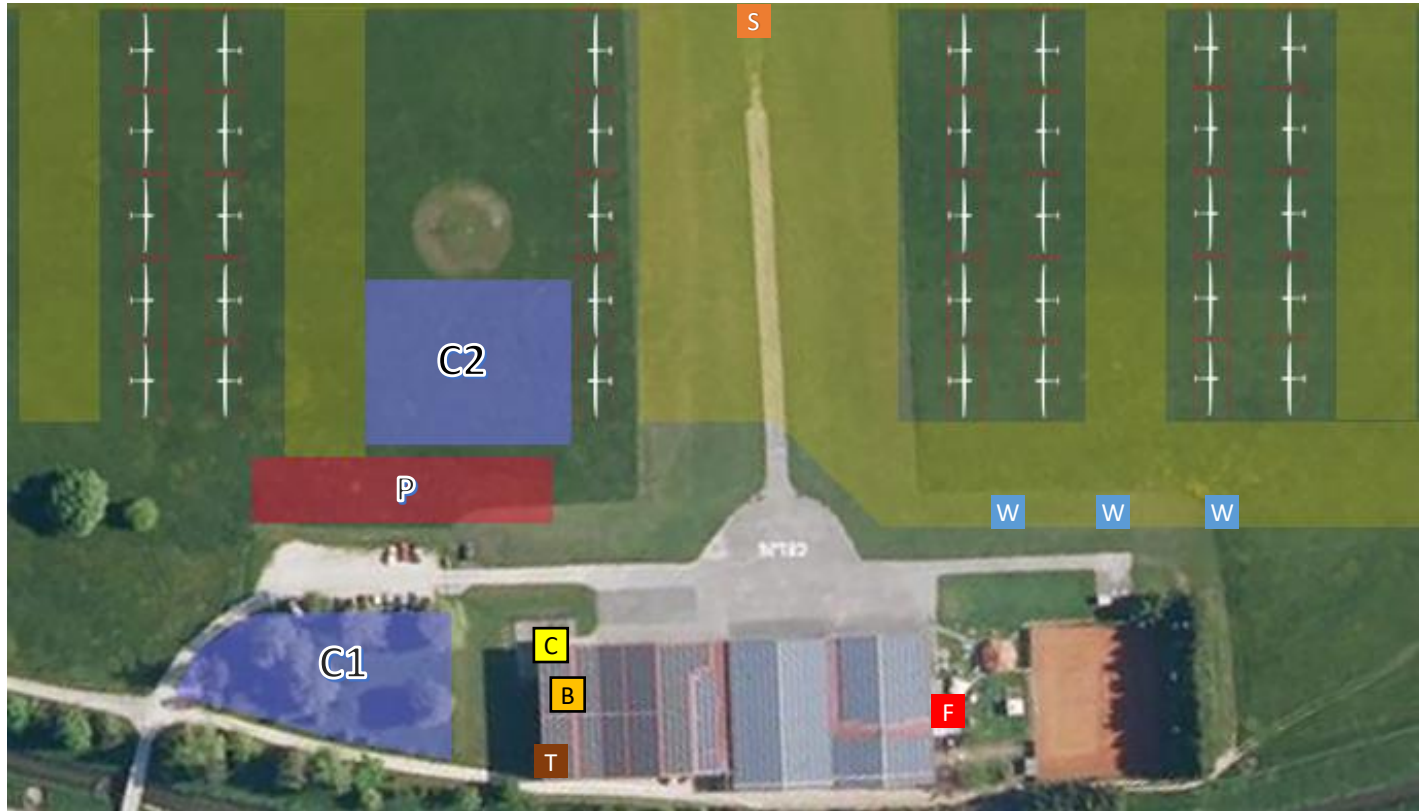


## Contest site boundaries



-  Contest site boundaries
-  Car parking
-  Car movement area. Strictly prohibited to drive with cars outside this area
-  Camping (C1-primary, C2-alternative, when C1 is full)

## Airfield facilities



**C** Registration / Administration

**B** Briefing room

**T** Toilets / Showers

**F** Drinks and food

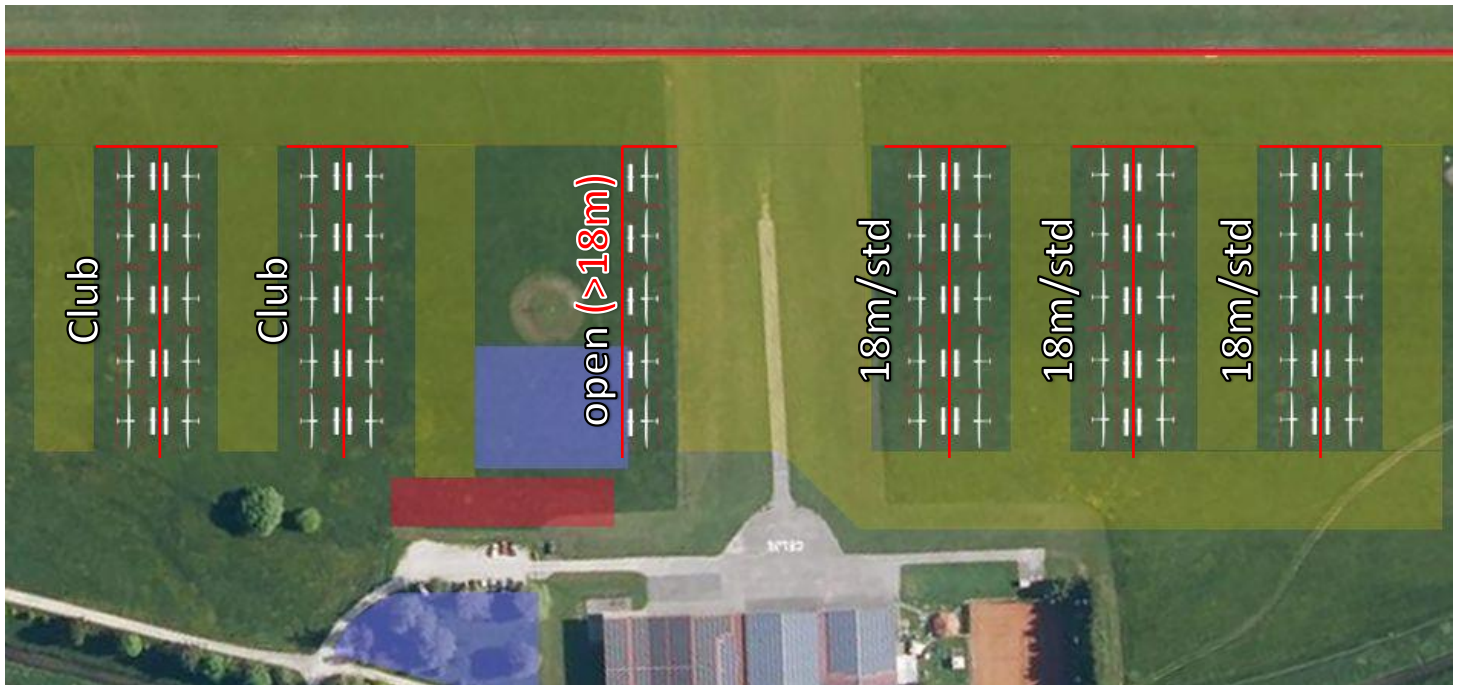
**W** Water taps for gliders

**S** Scale for daily weighting

**P** Parking

**C** Camp

## Glider parking

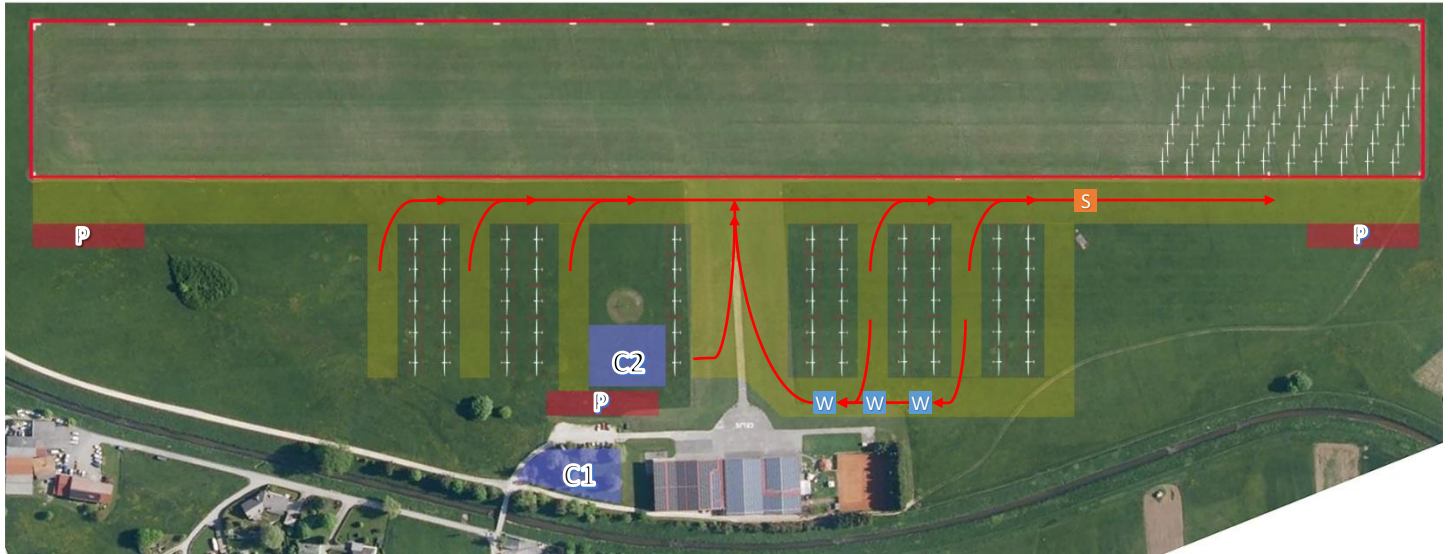


Glider parking area is marked on the ground with plastic tape.  
 Place trailer on the left or right side of the tape.  
 Place glider so that nose is close to trailer wheel.  
 Allow not more than 1m space between wingtips from another glider.

DO NOT park closer to the runway as indicated.



## Glider towing on ground RWY29



Maximum driving speed is 20km/h.

Once glider is filled with water please remove it from watering stations immediately.



## Frequencies

**128.805** airfield operations (towing, landing)

**122.260** competition announcements (start gate, 10km to airfield)

129.540 Pilot to pilot communication

132.780 Pilot to pilot communication

135.510 Pilot to pilot communication

## Launching procedure RWY29



Be ready for launch at least 2 minutes before take-off.  
Cars should be parked only on designated area.

Frequency for towing is 128.805. Silence on radio. No need to report release.  
Use only for distress like "NC go faster".

Report landing on 128.805 before entering traffic pattern. Use right traffic pattern only.  
On landing pull left outside of the runway or land short.

## Launching procedure RWY11

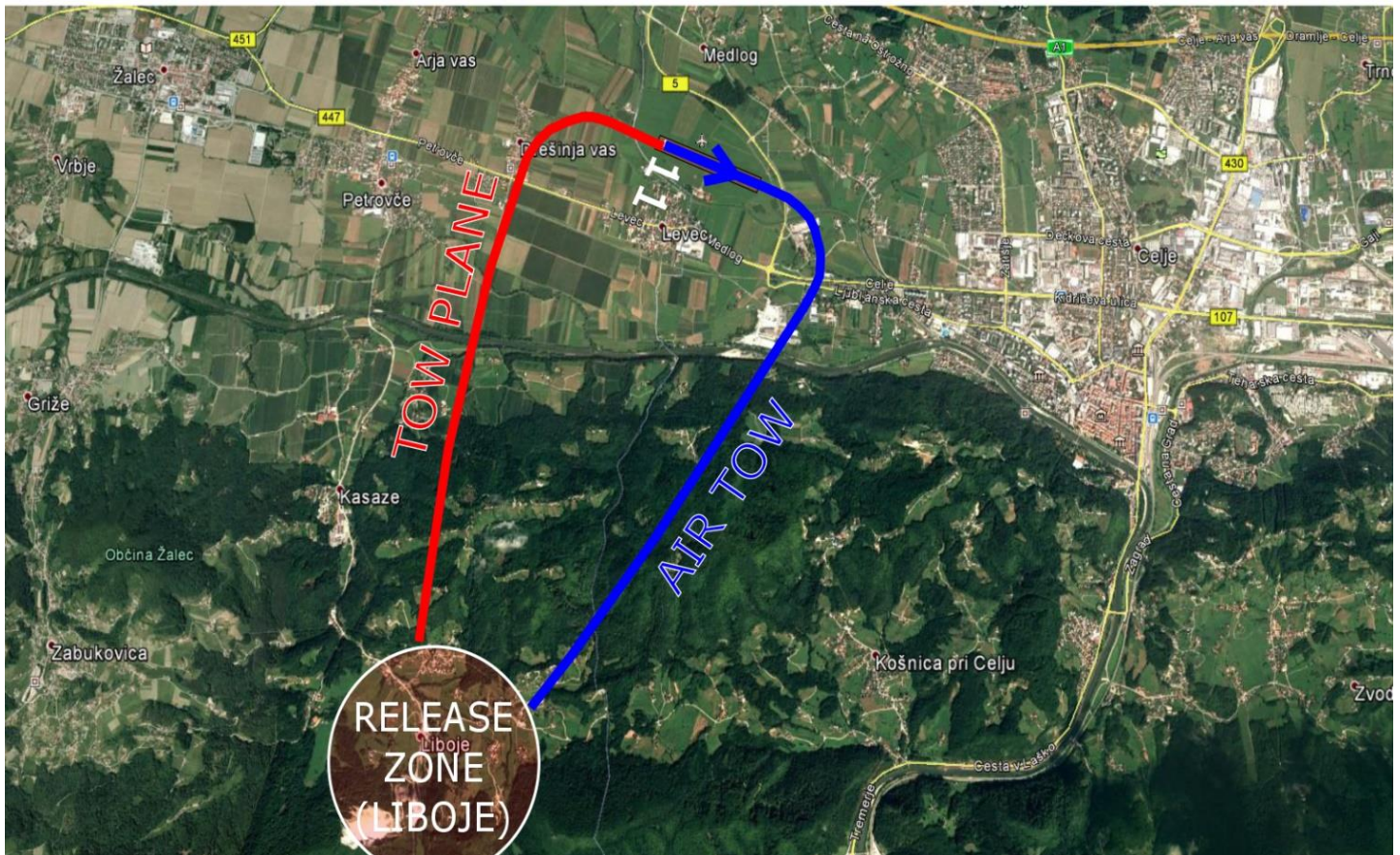


Be ready for launch at least 2 minutes before take-off.  
Cars should be parked only on designated area.

Frequency for towing is 128.805. Silence on radio. No need to report release.  
Use only for distress like "NC go faster".

Report landing on 128.805 before entering traffic pattern. Use left traffic pattern only.  
On landing pull right outside of the runway or land short.

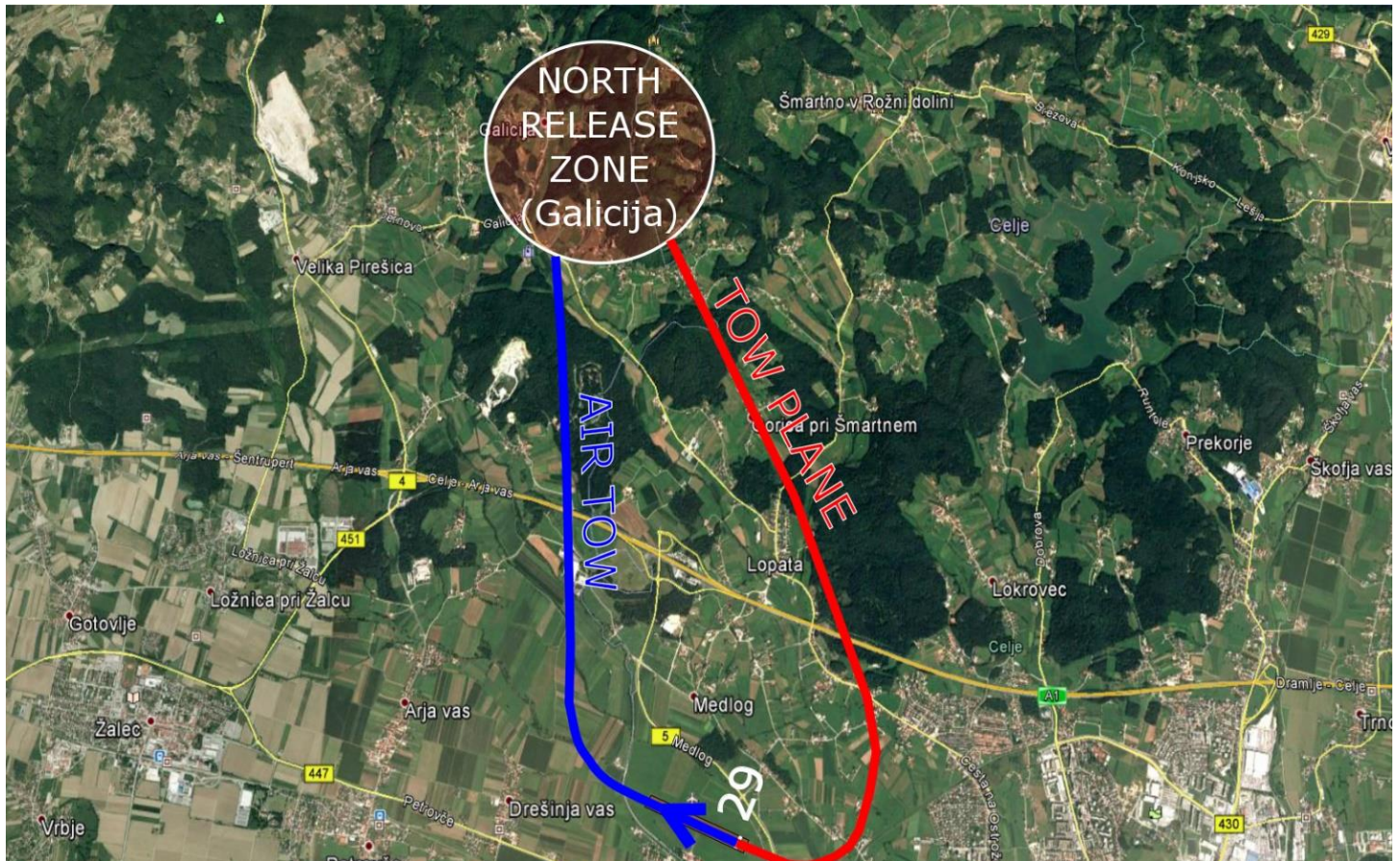
## Release zone SOUTH



Release altitude is typically 600m above airfield.

**Do not** report release on radio!

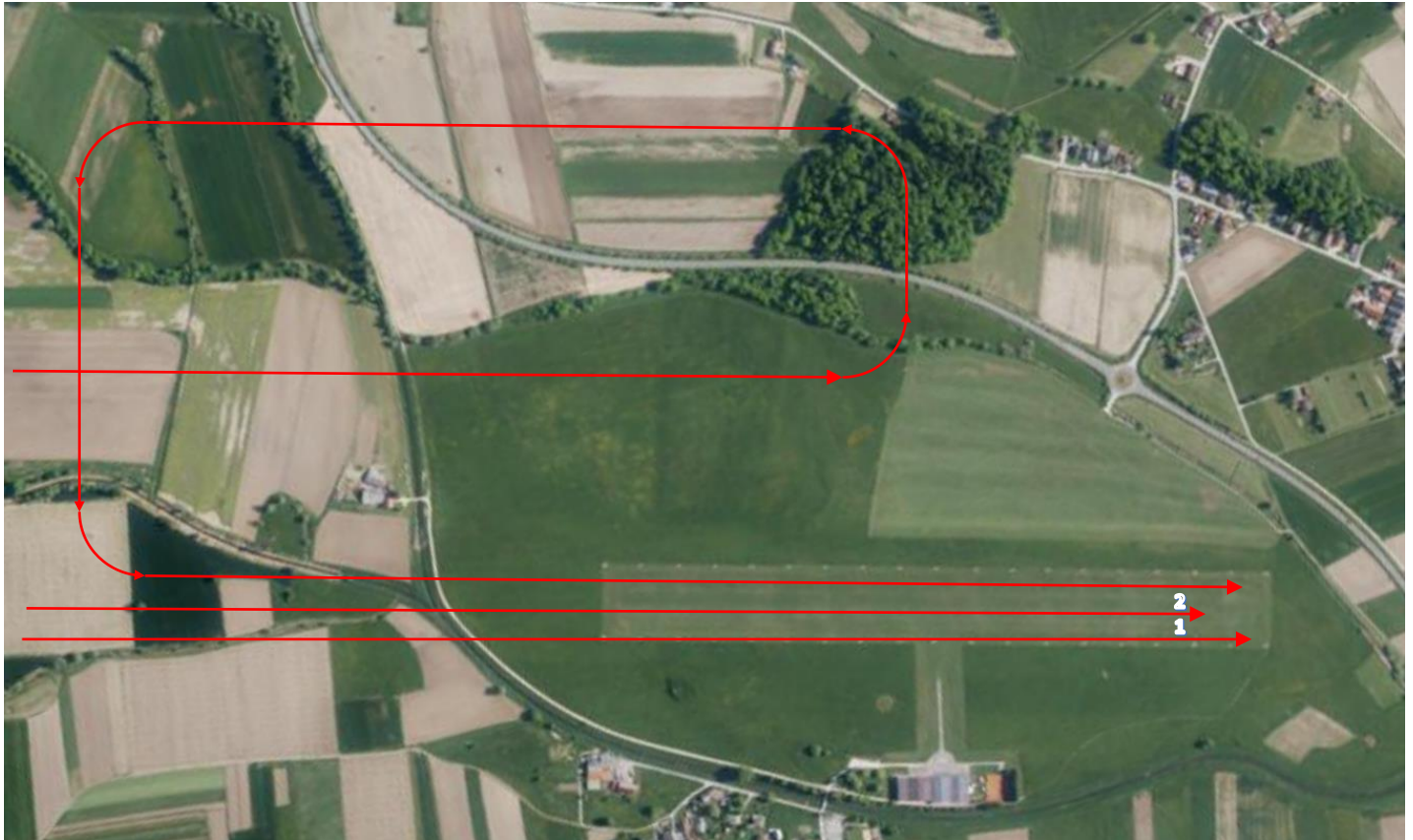
## Release zone NORTH



Release altitude is typically 600m above airfield.

**Do not report release on radio!**

## Landing procedure RWY11



Call 10km before finish ring on frequency **122.260**.  
For landing use frequency **128.805**

Long landings! Straight roll out.  
First use right (south) side of the runway.  
Left traffic pattern for non-direct landing.

## Landing procedure RWY29



Call 10km before finish ring on frequency **122.260**.  
For landing use frequency **128.805**

Long landings! Straight roll out.  
First use left (south) side of the runway.  
Right traffic pattern for non-direct landing.

## Landing procedure RWY29 – strong SW wind



Call 10km before finish ring on frequency **122.260**.  
For landing use frequency **128.805**

After touching finish ring turn right to base leg for runway 29

Long landings! Straight roll out.

## Scoring

After landing submit flights as soon as possible to  
[scoring@wwgc2027.com](mailto:scoring@wwgc2027.com)

All flights for a day must be submitted!

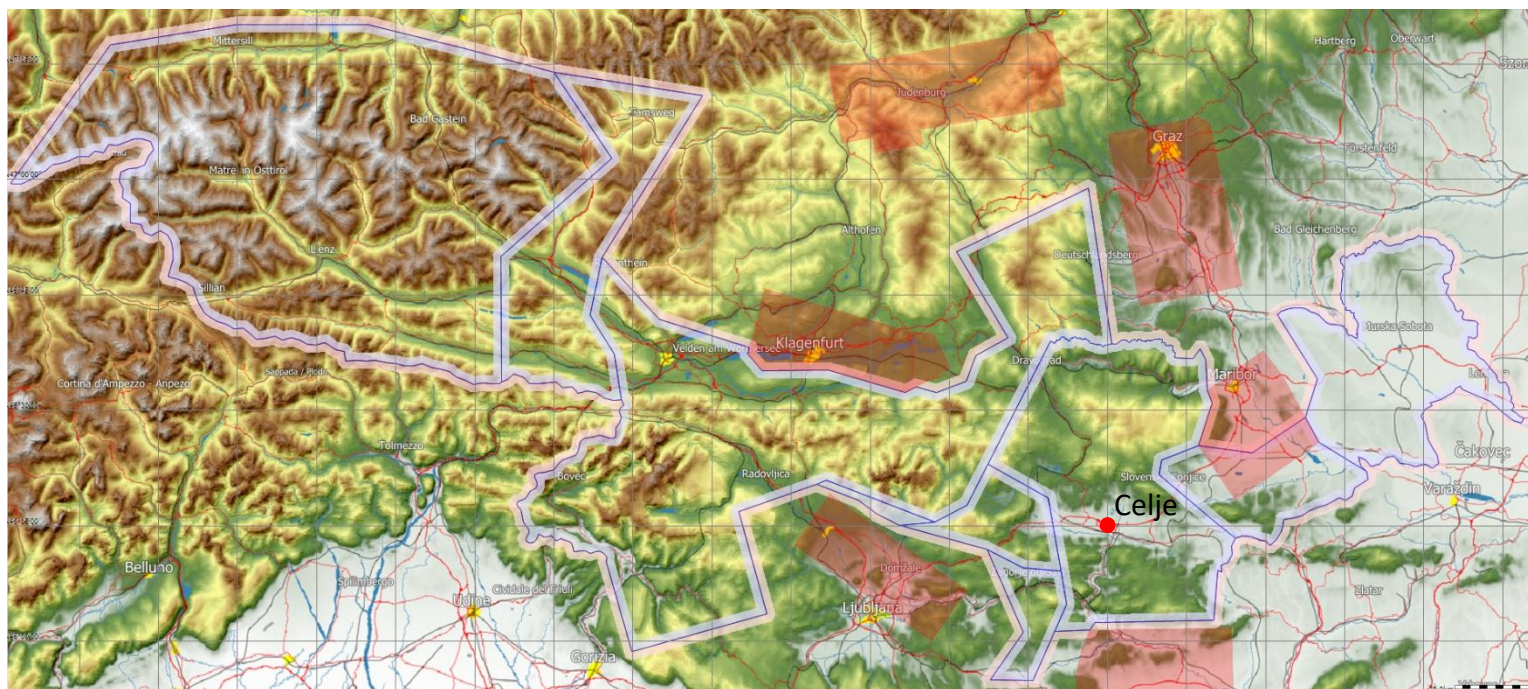
Results are published on SoaringSpot  
[https://www.soaringspot.com/en\\_gb/celjecup26/](https://www.soaringspot.com/en_gb/celjecup26/)

## Glider towing to tie down position



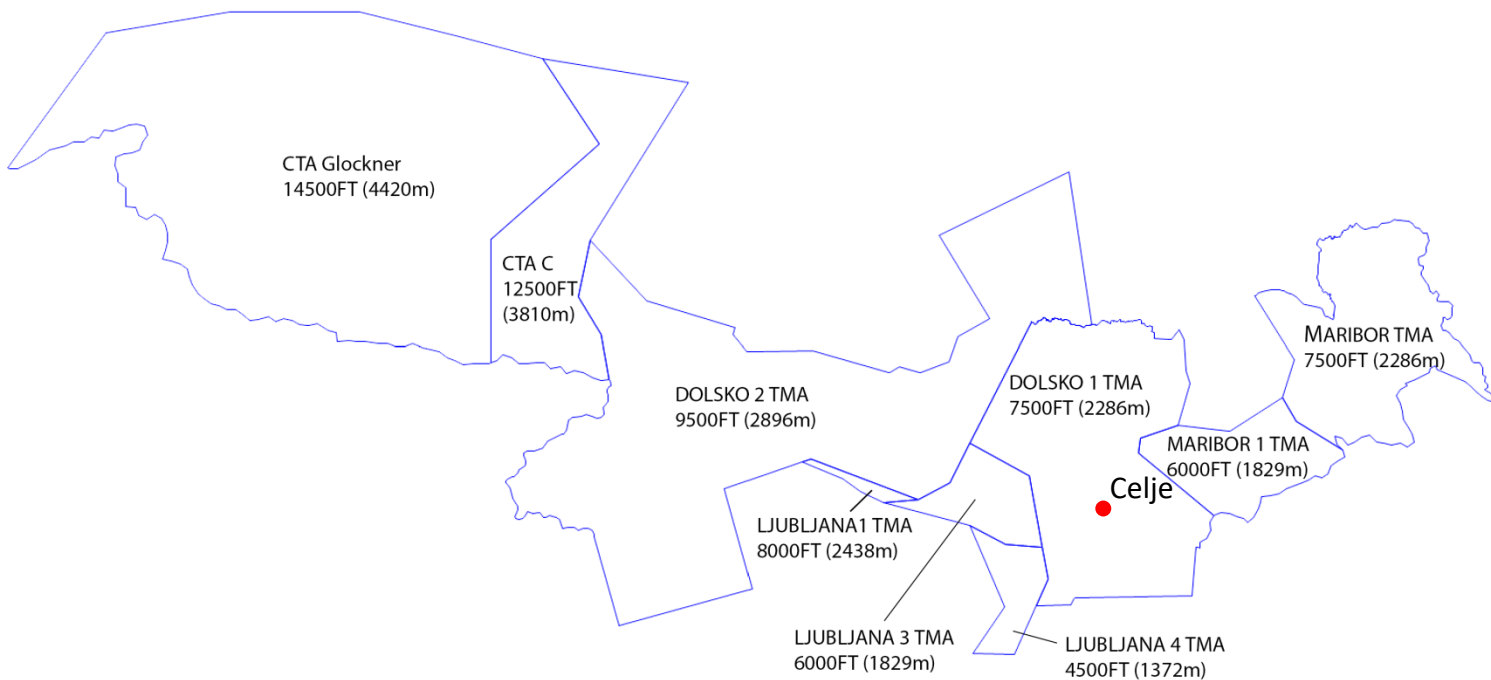
Maximum driving speed is 20km/h.  
Strictly no back tracking on the runway.

## Contest area



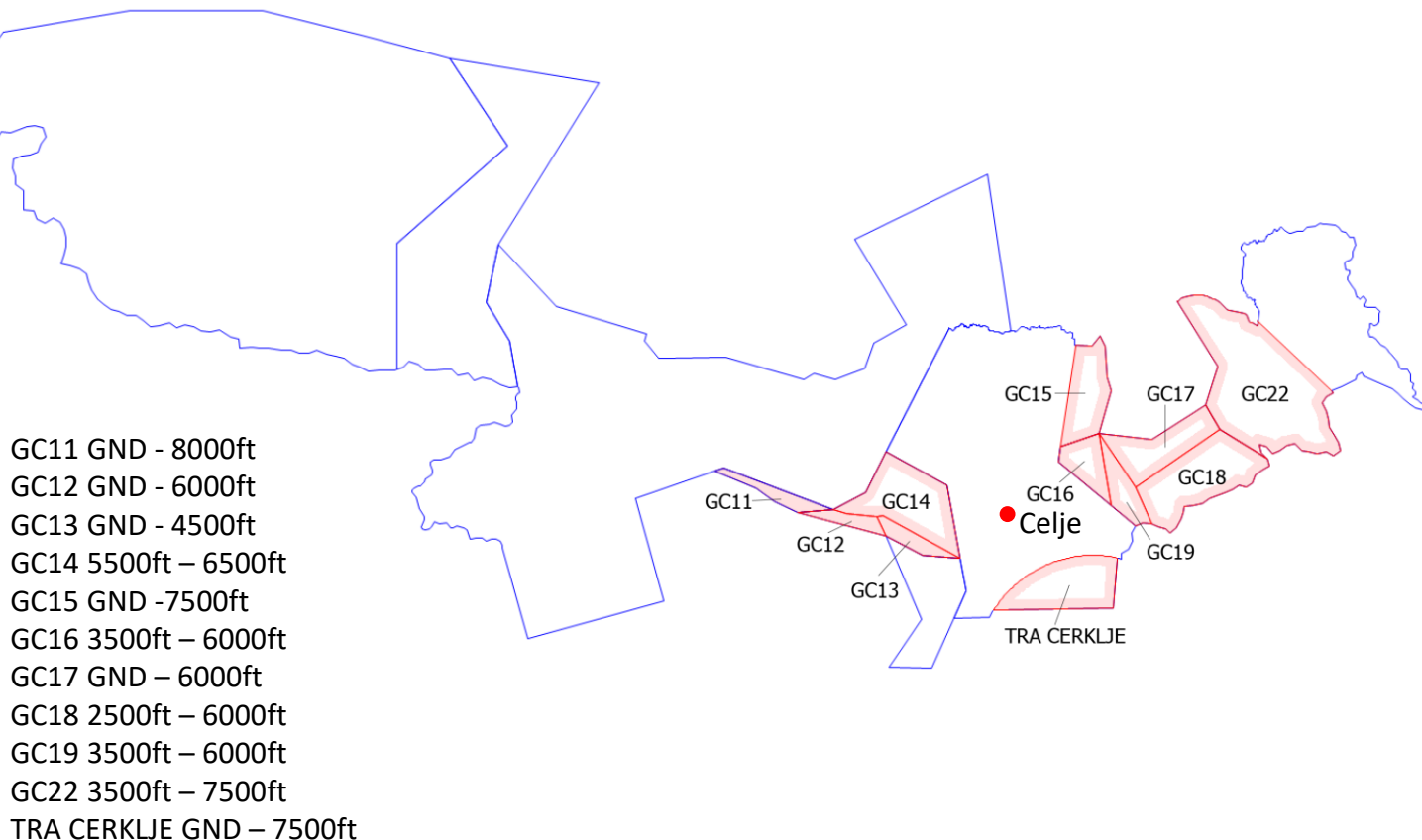


## Maximum altitudes



## Temporary reserved airspace

Temporary reserved airspace will be active/inactive on daily basis.





# Have a safe competition!



# Self-briefing



LIGHT AIRCRAFTS AND CARBON PARTS MANUFACTURER



[www.albatross-fly.si](http://www.albatross-fly.si)

